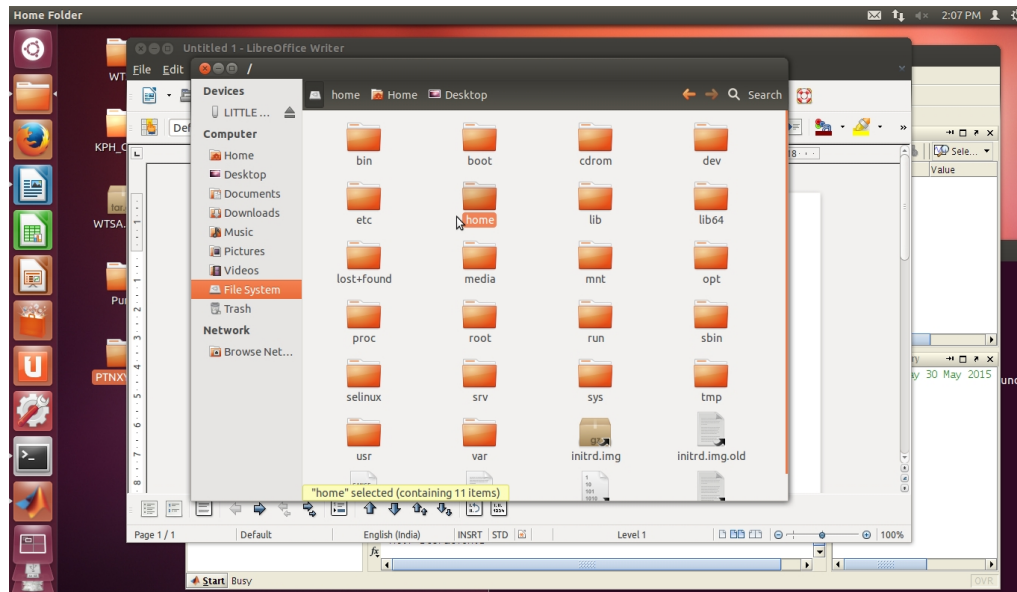


1. Open home folder.
2. Click on 'File System' (Left hand side bar)



3. Go to `usr>local>MATLAB>bin`
4. Right click on empty space while holding the shift key and select 'open in terminal'
5. Type `./matlab` in terminal and press enter. This will run the Matlab.
6. Go to www.d8creations.weebly.com/wtsa.html
7. Download all the files to Desktop and unzip. Move 'PTNXY' to Desktop
8. On the Matlab command prompt run the following command
`cd('/home/wtsa/Desktop/PTNXY/Simulations/General')`